

DIARRHOEA GENERAL

Abnormally frequent evacuation of watery stools. It may cause by intestinal infections. Other forms of intestinal inflammation mal-absorption, anxiety, and the irritable bowel syndrome.

Diarrhoea Diarrhoea = Abrot.—Diarrhoea and rheumatism after sudden checked diarrhoea.

Diarrhoea = Aloe., Puls., Nux-v.— Has diarrhoea from leaving off beer **Nux-v.** Has diarrhoea from leaving off alcoholic drinks.

Puls. Cures diarrhoea following the abuse of **Op.**

Diarrhoea = Aloe.—Worse during hot weather and in morning. Jelly Like Mucus comes out of the rectum almost unnoticed. Stools are often passed involuntarily when expelling flatus or passing urine. There is great rumbling before stool.

Diarrhoea = Ant-c.—Alternate diarrhoea and constipation of old persons.

Diarrhoea = Ant-t.—Diarrhoea in eruptive diseases, desire for stool in vain.

Diarrhoea = Arg-n.—Green mucus or turning green after remaining in diaper. Expelled with much spluttering; when going to any unusual event he has diarrhoea. Nursing infant will get green diarrhoea if the mother eats sugar.

Diarrhoea = Ars.—Least food or drink excites vomiting or stool or both, stool is black bloody and horribly offensive in diarrhoea with burning thirst for sips of cold water.

Diarrhoea = Benz-ac.—Diarrhoea of children white, very offensive stools running right through the diaper.

Diarrhoea = Calc =Cholera infantum or during dentition with profuse sweat on head. Sour diarrhoea worse in the afternoon, generally better when constipated.

Diarrhoea = Cham.—Dentition with diarrhoea of green stool smelling like rotten eggs. Colicky diarrhoea from wind. Anger.

Diarrhoea = Chin.,—1st to 30. The symptoms of undigested, frothy, painless stool very weakening with much flatulence.

Diarrhoea = Chin.—Diarrhoea with undigested stools.

Diarrhoea = Coloc.—Dysentery like diarrhoea, renewed each time after taking the least food or drink.

Diarrhoea = Eup-pur.— Deep, dull, diarrhoea.

Diarrhoea = Gels., Arg-n.—Prevents emotional diarrhoea before examination or public engagements.

Diarrhoea = Gels.—Diarrhoea after sudden emotions as grief, fear, bad news or the anticipation of an unusual ordeal.

Diarrhoea = Hep.—Green slimy diarrhoea of sour of a sour smell.

Diarrhoea = Ip.— for diarrhoea with persistent nausea, bloody and mucoid stool.

Diarrhoea = Kali-m.—Diarrhoea with pale, yellow faces.

Diarrhoea = Mag-c.—Diarrhoea, especially of children stools green and frothy like the scum of frog of pond griping pain, sour eructations.

Diarrhoea = Oeno—Effortless diarrhoea. Exhausting watery diarrhoea without efforts, with nervous exhaustion, even incipient hydrocephaloid. **(Oeno) Dr. Farrington.**

Diarrhoea = Ph-ac.—has diarrhoea with no weakness at all.

Diarrhoea = Ph-ac—While diarrhoea does not weaken, **(Calc)** feels better every way when constipated.

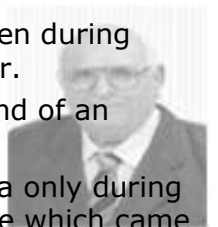
Diarrhoea = Phos.—Chronic painless diarrhoea of undigested food, with much thirst during the night.

Diarrhoea = Podo.—Stools profuse, offensive, aggravated in morning in hot weather and during dentition, stool comes out with force. There is prolapsus and sleep with eyes half closed, rolling of head from side to side and great desire to press the gums together during dentition.

Diarrhoea = Rheum.—Colicky diarrhoea of children during dentition with sour stool the whole child smells sour.

Diarrhoea = Rheum.—Diarrhoea, stools brown and of an excessively sour smell with much colic.

Diarrhoea = Rheum.—On the indication diarrhoea only during active exercise, cured a case of diarrhoea in a horse which came only when he was at work. **Dr. Hundall.**



Diarrhoea =Spig—Whenever the pains are about to commence a diarrhoea sets in (**Spig**)

Diarrhoea =Thuj.—Diarrhoea, stool expelled forcibly with much noisy flatus or with gurling nose as water from a bung-hole.

Diarrhoea =Verat.—Constipation from inactivity of rectum or diarrhoea very painful, watery, copious, forcibly evacuated followed by great prostration.

Diarrhoea 1st stage = Nux-v., Puls., Ip., Aeth. .—In the beginning.

Diarrhoea 2nd stage = Chin., Ph-ac., Cham., Arg-n.—Bad condition.

Diarrhoea 3rd stage = Podo., Nat-s.—Worse condition.

Diarrhoea 4th stage = Verat-a., Carb-v.—Serious condition.

Diarrhoea- Aggravation, After eating & drinking, After eating sp. at night =Chin.

Diarrhoea- Aggravation, After eating & drinking, After every meal =Arg-n. Nux-v.

Diarrhoea- Aggravation, After eating & drinking, From least food or drink =Ars., Croto-t.

Diarrhoea- Aggravation, After eating & drinking, Slight dietic error =Carc.

Diarrhoea- Aggravation, After eating & drinking, While eating or drinking =Ferr.

Diarrhoea- Aggravation, During the day, Damp weather =Dulc.

Diarrhoea- Aggravation, During the day, Nausea and colic =Ip.

Diarrhoea- Aggravation, During the day, Preceded by colic =Petr.

Diarrhoea- Aggravation, During the day, Sp. after noon =Calc.

Diarrhoea- Aggravation, During the night, After midnight =Sulph., Ars.

Diarrhoea- Aggravation, During the night, Good all day =Jalapa.

Diarrhoea- Aggravation, During the night, Painless =Chin., Ferr.

Diarrhoea- Aggravation, During the night, Sp. in evening =Puls.

Diarrhoea- Aggravation, During the weather, Autumnal =Ip.

Diarrhoea- Aggravation, During the weather, Damp =Dulc., Nat-s.

Diarrhoea- Aggravation, During the weather, Hot =Aloe., Ant-c.

Diarrhoea- Aggravation, During the weather, Summer, dentition =Podo., Sil., Grat.

Diarrhoea- Aggravation, in the morning, 5 AM, Driving out of bed =Sulph.

Diarrhoea- Aggravation, in the morning, During dentition =Podo.

Diarrhoea- Aggravation, in the morning, When walking or standing =Aloe.

Diarrhoea- Aggravation, in the morning, With cough =Rumex.

Diarrhoea- alternating with constipation =Podo., Ant-c., Nux-v., Op., Chel., Nit-ac., Ptel.

Diarrhoea- Amelioration, After passing stool, Burning =Gamb.

Diarrhoea- Amelioration, After passing stool, Colic =Mag-c., Rheum.

Diarrhoea- Amelioration, By motion =Puls.

Diarrhoea- Amelioration, During day time =Jal.

Diarrhoea- Amelioration, In the morning =Puls.

Diarrhoea- Amelioration, In the night =Nux-v., Bry.

Diarrhoea- anticipation =Arg-n., Gels.



Diarrhoea- Apt to occur with, Alternately with, Constipation =*Ant-c.*

Diarrhoea- Apt to occur with, Alternately with, Rheumatism =*Abrot.*

Diarrhoea- Apt to occur with, Colic, After food or drink =*Coloc.*

Diarrhoea- Apt to occur with, Colic, During daytime, Worse before stool =*Petr.*

Diarrhoea- Apt to occur with, Colic, Worse by least food or drink sp. cold =*Ars.*

Diarrhoea- Apt to occur with, Cough =*Rumex.*

Diarrhoea- Bad smell =*Sep.*—Diarrhoea yellow like pus or of bad smelling, fluids excoriating.

Diarrhoea- burning in anus =*Ars., Caps., Iris.*

Diarrhoea- Caused by cold drinks =*Lyc., Calc-p., Ars.*

Diarrhoea- Caused by drinking impure water =*Zing.*

Diarrhoea- Caused by during menses =*Kali-p.*

Diarrhoea- Caused by fright, scolding or whipped =*Cina.*

Diarrhoea- Caused by getting cold =*Dulc., Calc.*

Diarrhoea- Caused by mental disturbances, Sudden excitement =*Gels.*

Diarrhoea- Caused by mental disturbances, When ready to go out =*Arg-n.*

Diarrhoea- Caused by overeating =*Iod., Ox-ac.*

Diarrhoea- Caused by sleeping on damp ground =*Sil.*

Diarrhoea- Caused by suppression of skin affection, Dark-Brown stool, of intolerably offensive odour =*Psor.*

Diarrhoea- Caused by suppression of skin affection, Mixed with undigested substances =*Graph.*

Diarrhoea- Caused by suppression of skin affection, Painless, Driving patient out of bed early morning =*Sulph.*

Diarrhoea- Caused by taking ice-cream =*Calc-p.*

Diarrhoea- Caused by taking onion =*Thuja.*

Diarrhoea- Caused by taking oyster =*Lyc.*

Diarrhoea- Caused by taking sugar =*Arg-n.*

Diarrhoea- Caused by worms, Complaints arising from worms =*Cina.*

Diarrhoea- Caused by worms, Passes worms =*Stann.*

Diarrhoea- Caused by, taking coffee =*Lyc.*

Diarrhoea- children, of =*Arg-n., Calc., Cham., Podo., Rheum., Aeth., Calc-p., Sil., Ip., Mag-c.*

Diarrhoea- cholera infantum =*Arg-n., Calc., Podo., Aeth., Ant-t., Kreos.*

Diarrhoea- chronic =*Nit-ac., Psor.*

Diarrhoea- colicky =*Rheum., Cham., Mag-c., Coloc.*

Diarrhoea- Continuous stool with vomiting etc [Cholera], Cholera Morbus, Cold surface but aversion to heat =*Camph.*

Diarrhoea- Continuous stool with vomiting etc [Cholera], Cholera Morbus, Cold sweat on the forehead =*Verat., Tab.*

Diarrhoea- Continuous stool with vomiting etc [Cholera], Cholera Morbus, Cramp in stomach & extremities =*Cupr.*

Diarrhoea- Continuous stool with vomiting etc [Cholera], Cholera Morbus, Incessant vomiting =*Kreos.*

Diarrhoea- Continuous stool with vomiting etc [Cholera], Cholera infantum, Arisen from painful dentition =*Kreos.*

Diarrhoea- Continuous stool with vomiting etc [Cholera], Cholera infantum, Great sour vomiting & nausea = *Iris.*

Diarrhoea- Continuous stool with vomiting etc [Cholera], Cholera infantum, Cadaverous stool & warm sweat =*Bism.*

Diarrhoea- Continuous stool with vomiting etc [Cholera], Cholera infantum, Colic and convulsions =*Aeth.*

Diarrhoea- Continuous stool with vomiting etc [Cholera], Cholera infantum, Persistent nausea =*Ip.*

Diarrhoea- damp weather =*Nat-s.*

Diarrhoea- Dentition, during =*Calc., Cham., Podo., Rheum., Calc-p., Mag-c., Sil.*



Diarrhoea- Due to dietic error, During summer, Milky tongue =*Ant-c.*

Diarrhoea- Due to dietic error, During warm after cold Intense thirst =*Bry.*

Diarrhoea- Due to dietic error, From fruits, Painless with discharge of flatus =*Chin., Ox-ac.*

Diarrhoea- Due to dietic error, From mixed diet, Persistent nausea =*Ip.*

Diarrhoea- Due to dietic error, From over eating, Heaviness in stomach =*Nux-v.*

Diarrhoea- Due to dietic error, From rich fat foods. Relieved by motion =*Puls.*

Diarrhoea- During dentition, Abdomen bloated, Wind- Colic =*Cham.*

Diarrhoea- During dentition, Aversion to breast milk. Worse in hot weather =*Sil.*

Diarrhoea- During dentition, Incessant vomiting =*Kreos.*

Diarrhoea- During dentition, Very profuse, draining the patient dry =*Podo.*

Diarrhoea- During dentition, Water separates from =*Cham.*

Diarrhoea- During dentition, With much spluttering =*Calc-p.*

Diarrhoea- early morning =*Sulph., Podo., Nat-s.*

Diarrhoea- flatus, escape with =*Arg-n., Chin., Aloe., Olnd., Calc-p., Nat-s., Pyrog.*

Diarrhoea- food or drinking agg. =*Crot-t., Ars., Ferr., Coloc.*

Diarrhoea- forcible, like a shot =*Crot-t., Podo., Grat., Gamb.*

Diarrhoea- green =*Arg-n., Cham., Calc-p., Mag-c., IP.*

Diarrhoea hot weather =*Podo., Ant-c., Dulc., Aloe., Bry., Sil.*

Diarrhoea in children =*Cham 30.*---If due to dentition.

Diarrhoea in children =*Mag-c 3 or 30.*---Green Stools.

Diarrhoea in children =*Med 200.*Not be repeated. In richetty children.

Diarrhoea- involuntary =*Arn., Pyrog., Mur-ac.*

Diarrhoea- Involuntary stool, Anus as if wide open =*Apis.*

Diarrhoea- Involuntary stool, Heaviness in rectum =*Aloe.*

Diarrhoea- Involuntary stool, Passing unconsciously =*Arn., Hyos.*

Diarrhoea- Involuntary stool, Rectum prolapsing =*Mur-ac.*

Diarrhoea- Involuntary stool, Sphincter paralyzed =*Op.*

Diarrhoea- Involuntary stool, While passing flatus =*Olnd.*

Diarrhoea- lumpy and liquid =*Ant-c., Crot-t., Lyc.*

Diarrhoea- morning =*Podo., Nat-s., Nat-s., Rumex., Aloe., Bry., Calc-p., Sulph.*

Diarrhoea- move, on beginning to =*Bry., Nat-s.*

Diarrhoea- offensive =*Cham., Podo., Nat-s., Graph., Bism., Pyrog., Psor., Bapt.*

Diarrhoea- Painful (Colicky), Atony in stool =*Hep.*

Diarrhoea- Painful (Colicky), Burning in anus =*Iris.*

Diarrhoea- Painful (Colicky), Distended stomach, worse by touch =*Calc.*

Diarrhoea- Painful (Colicky), Worse before every stool =*Dulc.*

Diarrhoea- Painful (Colicky), Worse in region of liver =*Nat-s.*

Diarrhoea painful =*Merc-v.*--- Painful diarrhea with a "never get done" feeling.

Diarrhoea- painless =*Bism., Chin., Ferr., Ph-ac., Pyrog., Sulph.*

Diarrhoea painless =*Sulph.*--- Painless diarrhea drives patient out of bed in early morning.

Diarrhoea- Painless with marked debility =*Chin., Ox-ac.*

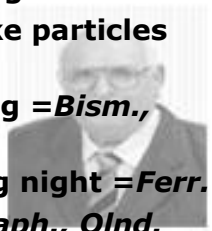
Diarrhoea- Painless, Not much debility =*Ph-ac.*

Diarrhoea- Painless, With burning in anus =*Grat.*



Diarrhoea- Painless, With vomiting =Bism.
Diarrhoea- Painless, worse in the morning =Podo.
Diarrhoea- Painless, Worse in the night =Ferr., Phos.
Diarrhoea- profuse =Bism., Podo., Verat.
Diarrhoea routine = A combination of, Veratum 30, Podo 30, is an effective remedy for diarrhea.
Diarrhoea- Rumbling, with =Aloe., Nat-s., Ph-ac., Gamb.
Diarrhoea- sour =Calc., Rheum., Hep., Mag-c.
Diarrhoea- sour stink =Calc., Rheum., Hep.
Diarrhoea- Stool gushing out, As if from hydrant =Phos.
Diarrhoea- Stool gushing out, As if from water bottle =Jatr.
Diarrhoea- Stool gushing out, By sudden expulsion =Gamb., Grat.
Diarrhoea- Stool gushing out, Coming like a shot =Croto-t.
Diarrhoea- Stool gushing out, Draining patient dry =Podo.
Diarrhoea- stool, Black Pitch-like =Lept.
Diarrhoea- stool, Brownish, Dark brown watery =Psor.
Diarrhoea- stool, Brownish, With undigested substances =Graph.
Diarrhoea- stool, Cadaverous =Bism., Kreos.
Diarrhoea- stool, Carrion-like =Psor.
Diarrhoea- stool, Foetid =Graph., Chin.
Diarrhoea- stool, Like rotten cheese =Bry.
Diarrhoea- stool, Like rotten egg =Cham.
Diarrhoea- stool, Musty =Coloc.
Diarrhoea- stool, Sour =Hep., Rheum., Calc., Mag-c.
Diarrhoea- stool, Foamy like yeast =Ip.
Diarrhoea- stool, Frothy =Grat.
Diarrhoea- stool, Greenish, Like grass =Ip., Cham.
Diarrhoea- stool, Greenish, Sour & Slimy =Mag-c., Rheum.

Diarrhoea- stool, Greenish, Turns green after remaining =Arg-n.
Diarrhoea- stool, Greenish, With apthous mouth =Bor.
Diarrhoea- stool, Greenish, With bloated abdomen =Cham.
Diarrhoea- stool, Greenish, With dysentery =Merc.
Diarrhoea- stool, Greenish, With much splutter-ring =Calc-p.
Diarrhoea- stool, Greenish, With vomiting =Aeth.
Diarrhoea- stool, Like chopped spinach =Arg-n.
Diarrhoea- stool, Like orange pulp =Nat-c., Sul-ac.
Diarrhoea- stool, Like scum of frog pond =Mag-c.
Diarrhoea- stool, Like stirred egg =Cham.
Diarrhoea- stool, Like white of egg =Nat-m.
Diarrhoea- stool, Smell, Very offensive =Podo.
Diarrhoea- stool, Watery Colourless =Valer.
Diarrhoea- stool, With undigested substances =Graph.
Diarrhoea- stool, With white slimy substances =Calc-p.
Diarrhoea- stool, Yellow watery, Frothy =Grat.
DIARRHOEA- stool, Yellow watery, Gurgling before stool =Thuj.
Diarrhoea- stool, Yellow watery, Profuse offensive =Podo.
Diarrhoea- stool, Yellow watery, Sudden expulsion =Croto-t., Gamb.
Diarrhoea- stool, Yellow watery, With large discharge of flatus =Chin.
Diarrhoea- stool, Yellow watery, With rumbling =Ph-ac.
Diarrhoea- stool, Yellow watery, With sago like particles =Phos., Jatr.
Diarrhoea- stool, Yellow watery, With vomiting =Bism., Verat., Kreos.
Diarrhoea- stool, Yellow watery, Worse during night =Ferr.
Diarrhoea- undigested =Calc., Chin., Ferr., Graph., Olnd.



Diarrhoea- undigested =Nux-m.—Diarrhoea undigested, like chopped eggs, loss of appetite and great sleepiness, in summer with children.

Diarrhoea- white = Calc., Ph-ac.

Diarrhoea- with rumbling =Aloe., Nat-s., Ph-ac.

Diarrhoea- with undigested particles =Calc., Chin., Ferr-p.

Diarrhoea- worse day =Petr.

Diarrhoea- =Ant-c. —For diarrhoea induced or Agg.. By acids, heat or bathing.

Diarrhoea- =Croto-t.— for prompt action in diarrhoea.

Diarrhoea- =Spig.—has diarrhoea whenever the pains commence.

Diarrhoea, during pregnancy =Aloe 30 or Podo 30.—Should be tried. If tenesmus not relieved by motion present, then **,Merc 30.**Should be tried.

CONCOMITANT SYMPTOMS & REMEDIES :-

DIARRHOEA GENERAL :[CLINICAL]:

Edema, general, external, diarrhoea, with :

Hell., Acet-ac.

Edema, general, diarrhoea, with nephritis in :

Phos.

DIARRHOEA GENERAL :[CONSTITUTION]:

Girls, general, headache, of, schoolgirls headache with diarrhoea school girls :

CALC-P.

DIARRHOEA GENERAL :[RECTUM]:

Diarrhoea, general :

AGAR., ALOE., ANT-C., ANT-T., APIS., ARG-N., ARS., BAPT., BAR-C., BRY., CALC., CANTH., CARB-V., CHAM., CHIN., CORN., CROT-T., DULC., FERR., FERR-AR., FERR-I., FL-AC., GAMB., HELL., HEP., IOD., IOD., IP., IRIS., KALI-BI., LYC., MERC., MERC-C., NAT-M., NAT-M., NAT-S., NIT-AC., PH-AC., PHOS., PODO., RHEUM., SEC., SIL., SULPH., THUJ., VERAT.

Diarrhoea general, acids, after :

NAT-P., Aloe., Ant-c., Brom., Ph-ac., Sulph., Apis., Ars., Bry., Cist., Coloc., Lach., Nux-v.

Diarrhoea general, after acid foods, amel :

Arg-n.

Diarrhoea general, acute diseases after :

Carb-v., Chin., Ph-ac., Psor., Sulph., Ars., Gels.

Diarrhoea general, afternoon :

CHIN., Ars., Bell., Bor., Chin-ar., Ferr., Merc., Psor.

Diarrhoea general, afternoon 4 p.m. :

Benz-ac.

Diarrhoea general, afternoon p.m. 6 p.m. :

Carb-v., Rhus-t.

Diarrhoea general, afternoon p.m 8 p.m. :

Lyc., Hell.

Diarrhoea general, afternoon 5 p.m. to 6 p.m :

Dig.

Diarrhoea general, afternoon 5 p.m. p.m. to 7 p.m :

Benz-ac.

Diarrhoea general, afternoon regularly :

Ferr.

Diarrhoea general, air, cold in :

Sil., Nat-s.

Diarrhoea general, air in evening :

MERC.

Diarrhoea general, on abdomen :

Caust.

Diarrhoea general, on abdomen currents of :

CAPS., NUX-V., Acon., Sil.

Diarrhoea general, air open in :

Agar., Am-c., Coff., Cycl., Grat.

Diarrhoea general, air open in amel :

PULS., Dios., Iod., Lyc., Nat-s.

Diarrhoea general, alcoholic, drinks after :

NUX-V., Ant-t., Ars., Lach., Sulph.

Diarrhoea general, alcoholic, after abuse of :

Ars., Lach., Nux-v.

Diarrhoea general, alcoholics, in :

LACH., Apis., Ars., Phos., Ant-t., Chin., Nux-v.

Diarrhoea general, aloe, after abuse of :

Sulph., Aloe., Mur-ac.



Diarrhoea general, alone when :

Stram.

Diarrhoea general, alternating with catarrh of chest :

Seneg.

Diarrhoea general, alternating chest eruptions :

Calc-p., Croto-t.

Diarrhoea general, alternating chest headache :

Podo., Aloe.

Diarrhoea general, alternating chest rheumatism :

Kali-bi., Cimic., Dulc.

Diarrhoea general, alternating constipation :

ALOE., ANT-C., CHEL., NIT-AC., NUX-V., OP., PODO.

Diarrhoea general, alternating constipation children:

Chin., Lyc., Podo., Verat.

Diarrhoea general, alternating constipation elderly people :

ANT-C., Phos., Ars., Bry., Nux-v., Op.

Diarrhoea general, ameliorates, all symptoms :

Ph-ac., Zinc., Abrot., Nat-s.

Diarrhoea general, ager after :

COLOC., Aloe., Calc-p., Cham., Nux-v., Staph.

Diarrhoea general, anticipation after :

ARG-N., GELS., Ph-ac., Ars., Hydrog.

Diarrhoea general, anxiety with :

ARG-N., Ars., Gels., Thuj.

Diarrhoea general, anxiety with after :

Ars., Gels., Camph., Sil., Tab.

Diarrhoea general, apyrexia during :

Iod.

Diarrhoea general, autumn, in :

COLCH., IRIS., Ars., Merc-c., Nux-v., Verat., Asc-t., Bapt., Chin., Ip., Merc.

Diarrhoea general, bathing after :

Ant-c., Podo., Calc., Rhus-t., Sars.

Diarrhoea general, bathing after cold after :

Ant-c.

Diarrhoea general, battle, on going into :

GELS.

Diarrhoea general, beer, after :

SULPH., Aloe., Chin., Gamb., Ind., Ip., Kali-bi., Lyc., Mur-ac.

Diarrhoea general, beer after amel :

Phos.

Diarrhoea general, belching amel :

Arg-n., Carb-v., Chin., Grat., Hep., Lyc.

Diarrhoea general, bilious :

NAT-S., PODO., Asc-t., Bry., Con., Fl-ac., Ip., Iris., Merc., Merc-c., Mur-ac., Nit-ac., Ph-ac., Psor., Ptel., Agar., Apis., Cact., Cham., Coloc., Eup-pur., Med., Ter.

Diarrhoea general, boils, begin to heal as soon as :

Rhus-t.

Diarrhoea general, breakfast, after :

NAT-S., THUJ., Arg-n., Rhod.

Diarrhoea general, breakfast after amel :

Bov., Nat-s., Trom.

Diarrhoea general, burns after :

Ars., Calc., Canth.

Diarrhoea general, cabbage, after :

Bry., Petr., Podo.

Diarrhoea general, camping from :

Jug-c., Podo.

Diarrhoea general, cancer of rectum with :

Card-m.

Diarrhoea general, castor oil after :

Bry.

Diarrhoea general, catarrh or coryza, after :

Sang.

Diarrhoea general, cathartics after :

NUX-V., Chin., Hep., Carb-v., Nit-ac.

Diarrhoea general, chagrin after :

Staph., Aloe., Bry., Cham., Coloc.

Diarrhoea general, chamomile abuse of :

Coff., Cham., Valer.

Diarrhoea general, chest after pains in the :

Sang.

Diarrhoea general, children in :

AETH., ARS., CALC., CALC-S., CHAM., IP., MAG-M., MERC., PHOS., PODO., PSOR., RHEUM., SIL., STRAM., SULPH., Acon., Agar., Arg-n., Benz-ac., Brom., Calc-p., Cina., Coloc., Croto-t., Dulc., Ferr., Form., Iris., Mag-c., Merc-c., Merc-d., Mez., Nat-m., Nux-v., Ph-ac., Puls., Staph., Valer.

Diarrhoea general, children in nursing :

Arund., Calc-p., Cham., Podo.

Diarrhoea general, chill, during :

PHOS., VERAT., Ars., Chin., Cina., Elat., Nux-v., Puls., Rhus-t.

Diarrhoea general, chill, during after :



Sec.
Diarrhoea general, chill, during before :
 Verat.
Diarrhoea general, chocolate after :
 ARG-N., *Lith.*, Bor.
Diarrhoea general, cholera epidemic during :
 IP., *Phos.*, Ars., Camph., Chin., Cupr., Puls., Sec., Verat.
Diarrhoea general, cholera during after an attack of :
 Sec.
Diarrhoea general, chronic :
 CHIN., PH-AC., *Arg-n.*, Ars., Calc., Chap., Coto., Cupr-ar., Ferr-m., Graph., Merc.,
Nat-s., *Phos.*, *Podo.*, *Rhus-a.*, *Thuji.*, Tub.
Diarrhoea general, chronic, mucus, with large amounts of :
 Urt-u.
Diarrhoea general, cider after :
 Ant-c., Ars., Calc-p., Podo.
Diarrhoea general, coffee after :
Cist., *Cycl.*, *Thuji.*, Canth., Caust., Coloc., Corn., Fl-ac., Hyper., Ign., Nat-m., Osm.,
 Ox-ac., Phos.
Diarrhoea general, coffee after amel :
 Coloc., Brom., Corn., Phos.
**Diarrhoea general, coffee after smell of
 after :**
 Sul-ac.
Diarrhoea general, cold, applications amel :
 Puls., Cycl., Lyc.
Diarrhoea general, cold after taking :
 DULC., NUX-V., *Aloe.*, *Bell.*, *Bry.*, Calc., Caust., Cham., Ip., Jatr., Nat-ar., Nat-c.,
Nux-v., *Ph-ac.*, *Rhus-t.*, Sulph.
Diarrhoea general, cold after taking as after taking cold :
 Coloc.
Diarrhoea general, cold after taking summer in :
 PH-AC., *Dulc.*, *Aloe.*, Ant-t., Bry.
Diarrhoea general, cold becoming after :
 Cocc., *Dulc.*, *Ph-ac.*, Arg-n., Nat-ar.
Diarrhoea general, cold drinks after :
 ARS., Acon., Bry., Caps., Carb-v., *Dulc.*, Ferr., Ferr-ar., Hep., Lyc., Nat-s., Nat-s.,
Ph-ac., Puls., *Rhus-t.*, Sil., Staph., Sul-ac.
Diarrhoea general, cold during after amel :
 Phos.
Diarrhoea general, cold during after summer in :

NUX-V., Carb-v., Nat-s., Verat.
Diarrhoea general, cold coryza ceasing :
 Sang.
Diarrhoea general, cold nights :
 Dulc., Acon.
Diarrhoea general, cold during after place amel :
 Puls.
Diarrhoea general, cold weather from :
 DULC., Calc., Nit-ac., Nux-v., Polyg.
Diarrhoea general, confinement after :
 Hyos.
Diarrhoea general, coryza during :
 Chlor., Sep.
Diarrhoea general, coryza during following :
 Sang., Sel.
Diarrhoea general, cucumbers after :
 Verat.
Diarrhoea general, damp, weather :
 NAT-S., Calc., Dulc., Lept., Rhod., Agar., Aloe., Ars., Cist., Lach., Puls., Rhus-t.,
 Sulph.
Diarrhoea general, damp, weather amel :
 Alum., Asar.
Diarrhoea general, damp, weather cold weather :
 DULC., Calc., Merc., Asc-t., Nux-m., Rhod., Rhus-t., Zing.
Diarrhoea general, darkness agg :
 Stram.
Diarrhoea general, daytime only :
 NAT-M., PETR., Bry., Cocc., Con., Elaps., Form., Gamb., Hep., Kali-c., Nux-v.,
 Thuji., Trom.
Diarrhoea general, daytime only day and night :
 Calc-p., Coloc., Hyos., Kali-c., Merc-c., Sil.
Diarrhoea general, debauch after a :
 NUX-V., Ant-c., Chin.
Diarrhoea general, dentition during :
 CALC., CHAM., DULC., FERR., MAG-C., RHEUM., SIL., Acon., Aeth., Arg-n.,
 Ars., Bell., Bor., Calc-p., Cina., Coff., Coloc., Gels., Hep., Ip., Kreos., Merc., Podo.,
 Psor., Sep., Sulph.
Diarrhoea general, diet indiscretion in eating after the slightest :
 ALOE., ARS., CHIN., NAT-C., NUX-V., PHOS., PULS., Ant-c., Asaf., Bry., Carb-v.,
 Coloc., Gamb., Iod., Ip., Petr., Ph-ac., Podo., Psor., Sulph.
Diarrhoea general, diet indiscretion slightest least change of from :



Ars., All-s., Nux-v.

Diarrhoea general, dinner after :

GRAT., MAG-C., Lil-t., Alum., Am-m., Caps., Carbn-s., Chin., Coloc., Nat-m., Nit-ac., Nux-v., Ped., Trom., Verat.

Diarrhoea general, domestic cares from :

Coff., Ars.

Diarrhoea general, drainage bad :

Carb-ac., Pyrog.

Diarrhoea general, drinking water from :

ARG-N., ARS., FERR., FERR-AR., NUX-V., Aloe., Apis., Asaf., Cina., Croto-t., Elat., Grat., Podo., Sul-ac., Trom., Zing.

Diarrhoea general, drinking from bad water after :

ZING., Ars.

Diarrhoea general, drinking immediately after :

Arg-n., Croto-t., Podo., Cina.

Diarrhoea general, drugging after :

Nux-v., Ars.

Diarrhoea general, dry weather :

Alum., Asar.

Diarrhoea general, eating after :

ALOE., ARS., CHIN-AR., COLOC., CROTO-T., NAT-AR., PODO., PULS.

Diarrhoea general, eating after :

TROM., Thuj., Tab., Tanac., Verat., Zinc.

Diarrhoea general, eating while :

FERR., Croto-t., Kali-p., Ars., Chin., Podo., Puls., Rad-br., Trom.

Diarrhoea general, eating while amel :

Brom., Chel., Hep., Lith., Lyc., Petr.

Diarrhoea general, effluvia noxious from :

Crot-h., Pyrog.

Diarrhoea general, eggs after :

Chin-ar., Colch.

Diarrhoea general, elderly people :

ALOE., ANT-C., ARS., GAMB., NIT-AC., Carb-v., Chin., Ph-ac.

Diarrhoea general, elderly people prematurely with syphilitic mercurial :

Fl-ac.

Diarrhoea general, elderly people women :

Kreos., Nat-s.

Diarrhoea general, emaciated people, in :

SIL., Ars., Calc., Calc-p., Rheum., Sul-ac., Tub., Iod., Nat-m., Ph-ac., Phos.

Diarrhoea general, emotional :

ARG-N., GELS., OP., Acon., Aloe., Arn., Ars., Bry., Calc-p., Cham., Coloc., Ign., Kali-p., Ph-ac., Staph.

Diarrhoea general, eruptions suppressed after :

SULPH., Hep., Lyc., Urt-u., Aloe., Ant-t., Apis., Bry., Dulc., Mez., Petr.

Diarrhoea general, evening :

Aloe., Bor., Calc., Kali -c., Lach., Ph-ac., Phos., Sang.

Diarrhoea general, evening cold air, in :

MERC., Colch., Nat-s.

Diarrhoea general, exanthemata, during :

Ant-t., Ars., Chin., Puls., Squil.

Diarrhoea general, exanthemata during after suppression of :

Bry., Ant-t., Graph., Hep., Merc., Psor., Sulph.

Diarrhoea general, excitement from :

ACON., ARG-N., ARS., GELS., Arg-m., Carb-v., Cham., Crot-h., Kali-p., Lach., Lyc., Ph-ac., Thuj.

Diarrhoea general, excitement from fear with :

ACON., Arg-n., Gels.

Diarrhoea general, excitement from theatre before going to :

ARG-N., Gels.

Diarrhoea general, exertion bodily during :

Rheum,

Diarrhoea general, exertion during after :

Calc., Puls., Rhus-t., Ars., Ferr., Nat-s.

Diarrhoea general, fat flabby people :

Caps.

Diarrhoea general, fever with :

Aesc., Ars., Chin., Nux-m., Phos., Puls.

Diarrhoea general, fever with after :

Phos.

Diarrhoea general, fever with hectic during :

Aesc.

Diarrhoea general, fever with hectic during after :

Phos.

Diarrhoea general, fever with intermittent during :

CINA., Rhus-t., Ant-c., Ars., Chin-ar., Cocc., Con., Gels., Puls., Thuj.

Diarrhoea general, fever with puerperal :

Pyrog., Carb-ac., Sulph.

Diarrhoea general, fever with pernicious :

Camph., Cupr., Pyrog.



Diarrhoea general, fish, after :

Ars., Chin-ar.

Diarrhoea general, flatus, after :

Nat-m.

Diarrhoea general, fluids loss of after :

Carb-v., Chin., Ph-ac.

Diarrhoea general, food acids, agg :

Nat-p., Lach.

Diarrhoea general, food agg amel :

Arg-n.

Diarrhoea general, food artificial after :

Nat-p., Alum., Calc., Mag-c., Sulph.

Diarrhoea general, food aversion to with :

Ars., Chin., Nux-m., Phos., Puls.

Diarrhoea general, food change of after :

All-s., Nux-v.

Diarrhoea general, food cold agg :

ARS., DULC., Carb-v., Lyc., Nat-s., Nit-ac., Nux-v., Ph-ac., Puls., Rhus-t.

Diarrhoea general, food cold agg amel :

PHOS.

Diarrhoea general, food crude :

Cham.

Diarrhoea general, food farinaceous after :

NAT-M., NAT-S., Lyc., Nat-c.

Diarrhoea general, food fat, after :

Kali-chl., Puls., Ant-c., Carb-v., Cycl., Kali-m., Mag-s., Thuj.

Diarrhoea general, food rancid after :

Ars., Carb-v.

Diarrhoea general, food rich, after :

PH-AC., Olnd., Podo., Bapt.

Diarrhoea general, food warm agg :

Phos.

Diarrhoea general, forenoon :

PODO., Aloe., Cact., Gamb., Nat-m., Nat-s., Sulph., Thuj., Tub.

Diarrhoea general, forenoon 8 a.m. :

Ferr., Nat-m.

Diarrhoea general, forenoon a.m 8 to 10

a.m. :

Plan.

Diarrhoea general, forenoon 9 a.m. :

Nat-s.

Diarrhoea general, forenoon 10 a.m. :

Nat-m.

Diarrhoea general, forenoon 10 a.m. to 10

p.m. :

Aloe.

Diarrhoea general, fright, after :

GELS., OP., Arg-n., Kali-p., Ph-ac., Puls., Acon., Ign., Phos., Verat.

Diarrhoea general, fruit, after :

ARS., BRY., CHIN., COLOC., NAT-P³., PULS., VERAT., Aloe., Bor., Calc-p., Carb-v., Chin-ar., Cist., Croto-t., Ferr., Ip., Iris., Lyc., Mur-ac., Olnd., Ph-ac., Podo., Rhod.

Diarrhoea general, fruit, after sour, after :

Ant-c., Cist., Ip., Lach., Ph-ac.

Diarrhoea general, fruit, after with milk after :

Podo.

Diarrhoea general, fruit, after stewed after :

Bry.

Diarrhoea general, fruit, after unripe fruit after :

Ip., Sul-ac., Aloe., Chin., Rheum.

Diarrhoea general, game high after :

ARS., Carb-v., Crot-h., Lach., Pyrog.

Diarrhoea general, gastric high after :

Ant-c., Chin., Nux-v., Puls., Ars., Bry., Coloc., Ip., Lyc.

Diarrhoea general, ginger after :

Nux-v., Zing.

Diarrhoea general, glistening objects looking at :

Stram., Lyss.

Diarrhoea general, gouty, subjects :

Benz-ac., Colch., Iod.

Diarrhoea general, grief after :

PH-AC., Coloc., Gels., Ign., Calc-p., Op., Merc.

Diarrhoea general, ground standing on damp after :

DULC., Rhus-t., Bell-p., Elat.

Diarrhoea general, hair, cutting after :

Bell.

Diarrhoea general, headache after :

Hydrog.

Diarrhoea general, heat, dry amel :

Sulph.

Diarrhoea general, heat amel :



Ars., Hep.

Diarrhoea general, heat moist external amel :

Nux-v.

Diarrhoea general, heat sun of :

Agar., Camph., Carb-v.

Diarrhoea general, hot weather :

ACON., BRY., CAMPH., CHIN., CROTO-T., GAMB., NUX-M., OLND., PODO., Aeth., Aloe., Ant-c., Ars., Bell., Carb-v. Cham., Crot-h., Cupr., Cupr-ar., Ferr., Hyper., Iod., Ip., jatr., Kali-br., Mez., Nat-m., ph-ac., Phos., Psor., Sec., Sul-ac.

Diarrhoea general, hot weather hot days and cold nights :

Acon., Dulc., Merc-c.

Diarrhoea general, hydrocephalus acute during :

Apis., Calc., Carb-ac., Hell., Zinc., Bell., Calc-p., Ph-ac.

Diarrhoea general, hyperacidity from :

Nat-p., Cham., Rheum., Rob.

Diarrhoea general, ice cream after :

ARS., PULS., Carb-v., Arg-n., Bry., Calc-p., Dulc.

Diarrhoea general, ice after amel :

Phos.

Diarrhoea general, imagination from exalted :

Arg-n.

Diarrhoea general, indignation from :

Coloc., Gels., Ip., Staph.

Diarrhoea general, injuries after :

Ars.

Diarrhoea general, intestinal atony debility from :

Arg-n., Chin., Ferr., Sec., Aloe., Ars., Caps., Oena., Oreo.

Diarrhoea general, jaundice during :

Chion., Dig., Lycps., Merc., Nat-s., Nux-v., Podo., Sulph., Chel., Crot-h., Sep.

Diarrhoea general, joy, sudden from :

OP., Coff.

Diarrhoea general, lemonade after :

Cit-ac., Phyt.

Diarrhoea general, light bright, from :

Bell., Stram., Coloc., Lyss.

Diarrhoea general, loss of fluids after :

CHIN., Carb-v., Ph-ac.

Diarrhoea general, lying agg :

Dios., Ox-ac., Raph.

Diarrhoea general, lying agg amel :

Bry., Merc., Podo., Sabad.

Diarrhoea general, lying agg abdomen on the amel

Aloe., Alum., Calc., Coloc., Phos., Rhus-t.

Diarrhoea general, lying agg back on the agg :

Phos., Podo.

Diarrhoea general, lying agg back agg amel :

Bry.

Diarrhoea general, lying side on the agg :

Bry., Nit-ac.

Diarrhoea general, lying side agg left agg :

Arg-n., Phos., Arn.

Diarrhoea general, lying side agg amel :

Phos.

Diarrhoea general, lying side agg right agg :

Ph-ac.

Diarrhoea general, lying side agg right agg amel :

Podo.

Diarrhoea general, magnesia, after :

Nux-v., Bry., Mag-c., Puls., Rheum.

Diarrhoea general, measles during :

Euphr., Puls., Squil.

Diarrhoea general, measles during after :

Carb-v., Puls., Chin., Merc., Squil.

Diarrhoea general, meat, from :

Caut., Ars., Carb-v. Ferr., Lept., Sep.

Diarrhoea general, meat, from calf :

Kali-n.

Diarrhoea general, meat, from putrescent, from :

Ars., Crot-h.

Diarrhoea general, meat, from smoked from :

Calc.

Diarrhoea general, melons, from :

Zing.

Diarrhoea general, menopause during :

Lach., Apis., Sep., Sulph., Tab.

Diarrhoea general, menopause during morning :

Rumx.

Diarrhoea general, menses during :

BOV., VERAT., Am-m., Caut., Kreos., Nat-p., Phos., Puls., Sars., Tab., Vib.

Diarrhoea general, menses during after :

Lach., Tub., Ars., Bov., Graph., Mag-m., Nat-m., Puls.



Diarrhoea general, menses during before :

BOV., LACH., *Am-c.*, *Cimb.*, *Nat-s.*, *Verat.*

Diarrhoea general, menses during before and during :

Am-m., *Bov.*, *Am-c.*, *Verat.*

Diarrhoea general, menses during beginning at :

AM-C.

Diarrhoea general, mental, exertion after :

Arg-n., *Nux-v.*, *Pic-ac.*, *Sabad.*

Diarrhoea general, mental after amel :

Kali-p.

Diarrhoea general, mercury, after abuse of :

Hep., *Kali-r.*, *Nit-ac.*, *Sulph.*, *Asaf.*, *Lach.*, *Merc.*, *Sars.*, *Staph.*

Diarrhoea general, milk after :

AETH., CALC., MAG-M., NAT-AR., NAT-C., SEP., *Kali-ar.*, *Kali-c.*, *Lyc.*, *Mag-c.*, *Nicc.*, *Nux-m.*, *Sil.*, *Sulph.*

Diarrhoea general, milk after boiled, after :

Nux-m., *Sep.*

Diarrhoea general, milk after hot amel :

Chel., *Croto-t.*

Diarrhoea general, milk after sour, after :

Podo.

Diarrhoea general, morning :

ALOE., BOV., BRY., CORN., KALI-BI., MAG-C., NAT-S., PHOS., PODO., RUMX., SULPH., *Agar.*, *Apis.*, *Arg-n.*, *Ars.*, *Ars-r.*, *Bor.*, *Cact.*, *Coloc.*, *Cop.*, *Dig.*, *Dios.*, *Dulc.*, *Ferr.*, *Ferr-ar.*, *Gamb.*, *Grat.*, *Guar.*, *Hydr.*, *Iod.*, *Kali-c.*, *Lil-t.*, *Lith.*, *Lyc.*, *Merc.*, *Mur-ac.*, *Nuph.*, *Nux-v.*, *Petr.*, *ph-ac.*, *Puls.*, *Tab.*, *Thuj.*, *Tub.*, *Verat.*, *Zinc.*

Diarrhoea general, morning 4 a.m. :

Mang., *Petr.*

Diarrhoea general, morning 5 a.m. :

SULPH., *Phos.*, *Aloe.*, *Syph.*, *Tub.*

Diarrhoea general, morning 6 a.m. :

Sulph., *Aloe.*, *Arg-n.*, *Kali-p.*, *Lach.*, *Ox-ac.*, *Petr.*

Diarrhoea general, morning a.m. noon :

Rumx.

Diarrhoea general, morning 7 a.m. :

Xan.

Diarrhoea general, morning 10 a.m. to noon :

Rumx.

Diarrhoea general, morning afternoon, until :

Nat-m., *Bor.*

Diarrhoea general, morning bed driving out of :

ALOE., SULPH., *Kali-br.*, *Lit-t.*, *Phos.*, *Podo.*, *Psor.*, *Rumx.*, *Sil.*, *Tub.*, *Zinc.*

Diarrhoea general, morning rising after :

NAT-S., *Bry.*, *Cocc.*, *Nat-m.*, *Nux-v.*, *Phos.*, *Psor.*, *Sulph.*

Diarrhoea general, morning rising after and moving about :

BRY., NAT-S., *Nat-m.*, *Ars-i.*, *Lept.*

Diarrhoea general, morning waking with urging :

SULPH., *Cench.*, *Form.*, *Graph.*, *Kali-bi.*, *Kali-i.*, *Lyc.*, *Petr.*, *Phos.*, *Zinc.*

Diarrhoea general, motion, agg :

APIS., BRY., FERR., VERAT., *Bell.*, *Colch.*, *Croto-t.*, *Ferr-ar.*, *Nat-m.*, *Nux-v.*, *Podo.*, *Tub.*

Diarrhoea general, motion, agg amel :

Dios., *Rhus-t.*, *Coloc.*, *Cub.*, *Cycl.*, *Nit-ac.*, *Plan.*, *Rhod.*, *Zinc.*

Diarrhoea general, motion, agg downwards :

Bor., *Cham.*, *Sanic.*

Diarrhoea general, nephritis, from :

Apis., *Ter.*

Diarrhoea general, news bad from :

GELS.

Diarrhoea general, news from exciting from :

GELS.

Diarrhoea general, nervousness, agg :

ARG-N., GELS., *Ars.*, *Cham.*, *Coff.*, *Op.*, *Puls.*, *Verat.*, *Acon.*, *Hyos.*, *Ign.*, *Phos.*, *Podo.*

Diarrhoea general, night :

ARG-N., ARS., CHIN., CHIN-AR., DULC., FERR-AR., IRIS., KALI-AR., LACH., MERC., NAT-AR., NUX-M., PODO., PSOR., PULS., SULPH.

Diarrhoea general, night 1 a.m. to 3 a.m. :

Asc-t.

Diarrhoea general, night 1 a.m. to 4 p.m. :

Psor.

Diarrhoea general, night 2 a.m. :

Ars., *Aran.*, *Cic.*, *Phos.*, *Rhus-v.*, *Tab.*

Diarrhoea general, night 2 a.m. to 3 a.m. :

Iris., *Phos.*

Diarrhoea general, night 2 a.m. :

Cimic., *Mag-c.*, *Nat-c.*, *Petr.*, *Phos.*

Diarrhoea general, night 2 a.m. amel :

Stront-c.

Diarrhoea general, night 2 a.m. to 4 a.m. :

Kali-c., *Aeth.*, *Lyc.*

Diarrhoea general, night 2 a.m. to 11 a.m. :



Nat-m.
Diarrhoea general, night 4 a.m. :
 PODO., *Petr., Rhus-t., Fl-ac., Form., Mang., Phos., Sec.*
Diarrhoea general, night 4 a.m. to 6 a.m. :
All-c., Phos.
Diarrhoea general, night 4 a.m. to 7 a.m. :
 Nuph.
Diarrhoea general, night 5 a.m. to 6 a.m. :
Nuph.
Diarrhoea general, night lying agg :
Lach.
Diarrhoea general, night midnight after :
 ARS., FERR-AR., KALI-AR., SULPH., *Arg-n., Chin., Chin-ar., Nux-v.*
Diarrhoea general, night midnight after before :
 Mag-c., Nux-v., Puls., Rhus-t.
Diarrhoea general, night midnight after noon to :
 Ars., Cist.
Diarrhoea general, night only :
 Chin.
Diarrhoea general, noise from :
Nit-ac., Nux-v., Colch.
Diarrhoea general, noise from sudden from :
 Bell., Bor.
Diarrhoea general, noisy :
 Lem-m.
Diarrhoea general, noon :
 Alum., Ant-c., Bor., Carbn-s., Croto-t., jab., Mag-m., Sulph.
Diarrhoea general, noxious effluvia, from :
Crot-h., Bap., Carb-ac.
Diarrhoea general, nursing after infants :
Croto-t., Nux-v., Ant-c., Nat-c.
Diarrhoea general, nursing infants women in :
Chin., Rheum.
Diarrhoea general, onions, after :
Puls., Thuji., Lyc., Nux-v.
Diarrhoea general, opium, after :
 PULS., *Mur-ac., Nat-m., Nux-v.*
Diarrhoea general, oranges, after :
Ph-ac., Nat-p.
Diarrhoea general, overheated after being :

ANT-C., PULS., Acon., Aloe., Elat.
Diarrhoea general, oysters after :
Aloe., Brom., Lyc., Podo., Sul-ac.
Diarrhoea general, painless :
 BAPT., BISM., BOR., FERR., HEP., HYOS., NAT-M., PH-AC., PHOS., PODO.,
 SQUIL., SULPH., TUB.
Diarrhoea general, painless night :
Chin., Ars., Bor., Bry., Canth., Cham., Dulc., Merc., Puls., Rhus-t., Sulph., Verat.
Diarrhoea general, painless night only after eating in daytime :
 CHIN.
Diarrhoea general, palpitations, night :
 Jatr.
Diarrhoea general, pastry, after :
 PULS., *Ip., Kali-chl., Lyc., Nat-s., Ph-ac., Arg-n., Phos.*
Diarrhoea general, pears , after :
Verat., Bor., Bry.
Diarrhoea general, periodical :
Ars., Chin., Kali-br., Apis., Euph-c., Iris., Mag-c., Thuji.
Diarrhoea general, periodical alternate days on :
 CHIN., *Alum., Carb-ac., Iris., Ars., Dig., Fl-ac., Nit-ac.*
Diarrhoea general, periodical every fourth day :
 Sabad.
Diarrhoea general, periodical every day three weeks :
 Mag-c.
Diarrhoea general, periodical hour later each day :
 Fl-ac.
Diarrhoea general, periodical nightly :
 Iris.
Diarrhoea general, periodical same hour, at :
 Apis., Sabad., Sel., Thuji.
Diarrhoea general, periodical summer :
 Stram.
Diarrhoea general, perspiration, amel :
 Stram.
Diarrhoea general, perspiration, amel suppressed from :
 Acon., Cham., Ferr-p.
Diarrhoea general, pneumonia in :
 Ant-t., Ars.
Diarrhoea general, pork, after :
Puls., Acon., Acon-i, Ant-c., Cycl., Lyc., Nux-m.



Diarrhoea general, potatoes, after :

Alum., Coloc., Sep., Verat.

Diarrhoea general, potatoes, after sweet, after :

Calc-ar.

Diarrhoea general, pregnancy, during :

PHOS., Ant-c., Cham., Chel., Chin., Hyos., Lyc., Nux-m., Puls., Sec., Sep., Sulph.

Diarrhoea general, puerperal :

Cham., Hyos., Puls.

Diarrhoea general, quinine after abuse of :

CHIN., PULS., Ferr., Hep., Lach., Nat-m., Pall.

Diarrhoea general, rhubarb, after :

Cham., Coloc., Merc., Nux-v., Puls., Rheum.

Diarrhoea general, riding, from :

COCC., Petr., Mag-s., Nux-m., Psor.

Diarrhoea general, riding, from amel :

Nit-ac.

Diarrhoea general, riding, from train, in a :

Med.

Diarrhoea general, rising up agg :

Bry., Acon., Cocc., Op., Trom.

Diarrhoea general, rising agg bed from amel :

Cub., Dios., Mez.

Diarrhoea general, rubbing amel :

Dios., Lyc.

Diarrhoea general, salmon, after eating :

Fl-ac.

Diarrhoea general, sauerkraut after :

Bry., Petr.

Diarrhoea general, school girls in :

Calc-p., Ph-ac.

Diarrhoea general, sea, bathing from :

Mag-m., Sep.

Diarrhoea general, seashore, while at :

Ars., Bry.

Diarrhoea general, sensation as before a :

ALOE., DULC., Nit-ac., Agar., Apoc., Carl., Colch., Croto-t., Dig., Dros., Eupi., Form., Gels., Glon., Grat., Ind., Iris., Kali-n., Lyc., Merc-i-r., Mez., Nat-m., Phos., Pip-m., Plan., Plb., Sulph.

Diarrhoea general, sensation a smoking while :

Bor.

Diarrhoea general, sensation walking while :

Nat-m.

Diarrhoea general, septic, condition from :

ARS., PYROG., Carb-ac., Carb-v., Croto-h., Lach., Sulph.

Diarrhoea general, shell-fish, from :

Carb-v., Lyc.

Diarrhoea general, shining objects agg :

Stram., Lyss.

Diarrhoea general, sitting agg :

Croto-t., Dios.

Diarrhoea general, sitting agg amel :

Cocc.

Diarrhoea general, sitting agg erect agg :

Bry.

Diarrhoea general, sleep, during :

Sulph., Tub., Bry.

Diarrhoea general, sleep during after :

LACH., Bell., Pic -ac., Sulph., Zing.

Diarrhoea general, sleep during amel :

Phos., Alum., Croto-t.

Diarrhoea general, small-pox, during :

CHIN., Ars., Ant-t., Thuj.

Diarrhoea general, smoking agg :

Bor., Brom., Calad., Cham.

Diarrhoea general, soup, from :

Mag-c.

Diarrhoea general, spices from :

Chin., Phos.

Diarrhoea general, spring in :

Bry., Lach., Iris., Sars.

Diarrhoea general, standing agg :

ALOE., SULPH., Cocc., Ars., Bry., Ign., Lil-t., Rheum.

Diarrhoea general, standing agg amel :

Merc.

Diarrhoea general, stormy, weather :

Petr.

Diarrhoea general, strain, after a :

Rhus-t.

Diarrhoea general, sugar, after :

ARG-N., Merc., Sulph., Calc., Calc-c., Croto-t., Gamb., Ox-ac., Trom.



Diarrhoea general, sugar, after maple sugar :

Calc-s.

Diarrhoea general, sundown to sunrise agg from :

Colch.

Diarrhoea general, supper, after :

Hyper., Iris., Kali-p., Trom.

Diarrhoea general, suppressed gonorrhoea after :

MED., Thuj.

Diarrhoea general, sweets, from :

Arg-n., Gamb., Calc-s., Croto-t., Lyc.

Diarrhoea general, thinking of it :

Ox-ac.

Diarrhoea general, thunderstorm, during :

Nat-c., Phos., Rhod.

Diarrhoea general, thunderstorm during before :

Rhod.

Diarrhoea general, tobacco, from :

Brom., Calad., Cham., Ign., Puls., Tab.

Diarrhoea general, tuberculosis, during :

PH-AC., Arn., Ars., Ars-i., Bac., Bapt., Chin., Cupr-ar., Phos., Tub.

Diarrhoea general, typhoid fever, from :

Ars., Bapt., Hyos., Mur-ac., Rhus-t.

Diarrhoea general, ulceration of intestines from :

Kali-bi., Merc-c.

Diarrhoea general, urinating agg :

ALUM., Aloe., Hyos., Apis., Canth., Squil.

Diarrhoea general, uterine, bleeding with :

Tanac.

Diarrhoea general, vaccination after :

Thuj., Ant-t., Sil.

Diarrhoea general, vaginal discharge, with :

Puls.

Diarrhoea general, veal, after :

Kali-n.

Diarrhoea general, vegetables after :

Lyc., Nat-m., Nat-s., Ars., Bry., Cupr., Hell., Lept., Nat-ar., Nat-c., Petr., Podo., Verat., Zing.

Diarrhoea general, vexation from :

Calc-p., Coloc., Petr., Staph., Aloe., Cham., Sulph.

Diarrhoea general, vinegar after :

Ant-c., Acet-ac.

Diarrhoea general, walking agg :

ALOE., Calc., Gels., Alum., Merc.

Diarrhoea general, warm, application amel :

Nux-m., Alum., Podo., Rhus-t.

Diarrhoea general, warm, amel drinks agg :

Fl-ac.

Diarrhoea general, warm, amel food agg :

Phos.

Diarrhoea general, warm, amel room agg :

PULS., Iod., Apis., Nat-s.

Diarrhoea general, warmth agg :

Puls., Sec.

Diarrhoea general, warmth agg bed of amel :

SIL., Nux-v., Coloc.

Diarrhoea general, washing the head after :

Podo., Tarent.

Diarrhoea general, water, hearing running agg :

LYSS.

Diarrhoea general, water, hearing agg polluted from :

Zing., Ars., Camph.

Diarrhoea general, weakness, without :

PH-AC., Sulph., Tub., Puls.

Diarrhoea general, weaning after :

CHIN., Arg-n., Calc-p.

Diarrhoea general, weather change of from :

DULC., MERC., Acon., Bry., Nat-s., Ph-ac., Psor.

Diarrhoea general, wet after getting :

RHUS-T., Acon., Calc., Dulc., Sil.

Diarrhoea general, wet getting feet after getting :

RHUS-T., Acon., Nux-m.

Diarrhoea general, whooping cough during :

Cast-v., Dros.

Diarrhoea general, wind after exposure to cold :

Acon., Dulc.

Diarrhoea general, wind after cold east wind :

Psor.

Diarrhoea general, wine, from :

Zinc., Ant-c., Lach., Lyc.

Diarrhoea general, wine, from amel :



Chel., Dios.

Diarrhoea general, wine, from sour :

ANT-C.

Diarrhoea general, winter :

Nit-ac., Asc-t., Nat-s.

Diarrhoea general, wrapping up warmly amel

SIL.

Diarrhoea, general :

AGAR., ALOE., ANT-T., APIS., ARG-N., ARS., BAPT., BAR-C., BRY., CALC.,
CANTH., CARB-V., CHAM., CHIN., CORN., CROTO-T., DULC., FERR., FERR-
AR., FERR-I., FL-AC., GAMB., HELL., HEP., IOD., IP., IRIS., KALI-BI., LYC.,
MERC., MERC-C., NAT-M., NAT-S., NIT-AC., PH-AC., PHOS., PODO.,
RHEUM., SEC., SIL., SULPH., THUJ., VERAT.

DIARRHOEA GENERAL :[STOMACH] :

Nausea, general diarrhoea, with :

Cist.

Nausea, general diarrhoea, with anxiety, and :

Ant-t.

Retching, general, diarrhoea, during :

ARG-N., *Cupr., Croto-t.*

Vomiting, general alternating, with convulsions diarrhoea, with :

Carc.

Vomiting, general diarrhoea, during :

ARG-N., ARS., GAMB., IP., VERAT., *Aeth., Apis., Ars., Carb-ac., Colch., Cupr.,
Dulc., Gnaph., Graph., Grat., Hell., Iod., Jatr., Kreos., Phyt., Podo., Puls.*

Vomiting, general diarrhoea, during before :

Ars., Colch., Croto-t., Dig., Lach., Phos., Phyt.

Vomiting, general diarrhoea, during with :

Ars., Nit-ac.

Vomiting, general mucus diarrhoea, during :

ARG-N.

